

1.  $2x + 3 = 7$   
 $2x = 7 - 3$   
 $2x = 4$   
 $x = \frac{4}{2}$   
 $x = 2$

2.  $5y - 2 = 18$   
 $5y = 18 + 2$   
 $5y = 20$   
 $y = \frac{20}{5}$   
 $y = 4$

3.  $3z + 1 = 10$   
 $3z = 10 - 1$   
 $3z = 9$   
 $z = \frac{9}{3}$   
 $z = 3$

4.  $4a - 5 = 15$   
 $4a = 15 + 5$   
 $4a = 20$   
 $a = \frac{20}{4}$   
 $a = 5$

5.  $6b + 3 = 21$   
 $6b = 21 - 3$   
 $6b = 18$   
 $b = \frac{18}{6}$   
 $b = 3$

6.  $7c - 4 = 19$   
 $7c = 19 + 4$   
 $7c = 23$   
 $c = \frac{23}{7}$

7.  $8d + 2 = 22$   
 $8d = 22 - 2$   
 $8d = 20$   
 $d = \frac{20}{8}$   
 $d = \frac{5}{2}$

8.  $9e - 1 = 14$   
 $9e = 14 + 1$   
 $9e = 15$   
 $e = \frac{15}{9}$   
 $e = \frac{5}{3}$

9.  $10f + 5 = 35$   
 $10f = 35 - 5$   
 $10f = 30$   
 $f = \frac{30}{10}$   
 $f = 3$

10.  $11g - 3 = 28$   
 $11g = 28 + 3$   
 $11g = 31$   
 $g = \frac{31}{11}$

11.  $12h + 7 = 47$   
 $12h = 47 - 7$   
 $12h = 40$   
 $h = \frac{40}{12}$   
 $h = \frac{10}{3}$

12.  $13i - 2 = 38$   
 $13i = 38 + 2$   
 $13i = 40$   
 $i = \frac{40}{13}$

13.  $14j + 4 = 54$   
 $14j = 54 - 4$   
 $14j = 50$   
 $j = \frac{50}{14}$   
 $j = \frac{25}{7}$

14.  $15k - 6 = 69$   
 $15k = 69 + 6$   
 $15k = 75$   
 $k = \frac{75}{15}$   
 $k = 5$

15.  $16l + 1 = 71$   
 $16l = 71 - 1$   
 $16l = 70$   
 $l = \frac{70}{16}$   
 $l = \frac{35}{8}$

16.  $17m - 3 = 87$   
 $17m = 87 + 3$   
 $17m = 90$   
 $m = \frac{90}{17}$

17.  $18n + 5 = 95$   
 $18n = 95 - 5$   
 $18n = 90$   
 $n = \frac{90}{18}$   
 $n = 5$

18.  $19o - 7 = 103$   
 $19o = 103 + 7$   
 $19o = 110$   
 $o = \frac{110}{19}$

19.  $20p + 2 = 122$   
 $20p = 122 - 2$   
 $20p = 120$   
 $p = \frac{120}{20}$   
 $p = 6$

20.  $21q - 4 = 136$   
 $21q = 136 + 4$   
 $21q = 140$   
 $q = \frac{140}{21}$   
 $q = \frac{20}{3}$

21.  $22r + 6 = 156$   
 $22r = 156 - 6$   
 $22r = 150$   
 $r = \frac{150}{22}$   
 $r = \frac{75}{11}$

22.  $23s - 1 = 169$   
 $23s = 169 + 1$   
 $23s = 170$   
 $s = \frac{170}{23}$

23.  $24t + 3 = 183$   
 $24t = 183 - 3$   
 $24t = 180$   
 $t = \frac{180}{24}$   
 $t = 7.5$

24.  $25u - 5 = 195$   
 $25u = 195 + 5$   
 $25u = 200$   
 $u = \frac{200}{25}$   
 $u = 8$

25.  $26v + 7 = 217$   
 $26v = 217 - 7$   
 $26v = 210$   
 $v = \frac{210}{26}$   
 $v = \frac{105}{13}$

26.  $27w - 2 = 228$   
 $27w = 228 + 2$   
 $27w = 230$   
 $w = \frac{230}{27}$

27.  $28x + 4 = 244$   
 $28x = 244 - 4$   
 $28x = 240$   
 $x = \frac{240}{28}$   
 $x = \frac{60}{7}$

28.  $29y - 6 = 258$   
 $29y = 258 + 6$   
 $29y = 264$   
 $y = \frac{264}{29}$

29.  $30z + 1 = 261$   
 $30z = 261 - 1$   
 $30z = 260$   
 $z = \frac{260}{30}$   
 $z = \frac{26}{3}$

30.  $31a - 3 = 279$   
 $31a = 279 + 3$   
 $31a = 282$   
 $a = \frac{282}{31}$   
 $a = 9$

31.  $32b + 5 = 285$   
 $32b = 285 - 5$   
 $32b = 280$   
 $b = \frac{280}{32}$   
 $b = \frac{35}{4}$

32.  $33c - 7 = 293$   
 $33c = 293 + 7$   
 $33c = 300$   
 $c = \frac{300}{33}$   
 $c = \frac{100}{11}$

33.  $34d + 2 = 302$   
 $34d = 302 - 2$   
 $34d = 300$   
 $d = \frac{300}{34}$   
 $d = \frac{150}{17}$

34.  $35e - 4 = 316$   
 $35e = 316 + 4$   
 $35e = 320$   
 $e = \frac{320}{35}$   
 $e = \frac{64}{7}$

35.  $36f + 6 = 326$   
 $36f = 326 - 6$   
 $36f = 320$   
 $f = \frac{320}{36}$   
 $f = \frac{80}{9}$

36.  $37g - 1 = 339$   
 $37g = 339 + 1$   
 $37g = 340$   
 $g = \frac{340}{37}$

37.  $38h + 3 = 347$   
 $38h = 347 - 3$   
 $38h = 344$   
 $h = \frac{344}{38}$   
 $h = \frac{86}{9.5}$

38.  $39i - 5 = 353$   
 $39i = 353 + 5$   
 $39i = 358$   
 $i = \frac{358}{39}$

39.  $40j + 7 = 361$   
 $40j = 361 - 7$   
 $40j = 354$   
 $j = \frac{354}{40}$   
 $j = \frac{177}{20}$

40.  $41k - 2 = 378$   
 $41k = 378 + 2$   
 $41k = 380$   
 $k = \frac{380}{41}$

41.  $42l + 4 = 382$   
 $42l = 382 - 4$   
 $42l = 378$   
 $l = \frac{378}{42}$   
 $l = 9$

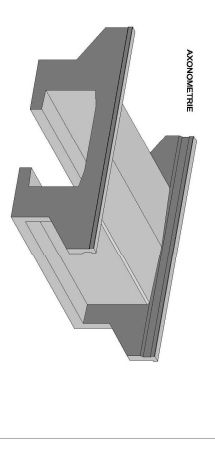
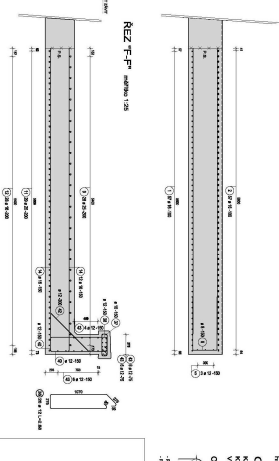
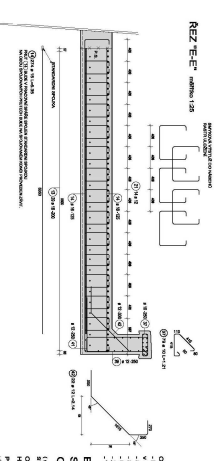
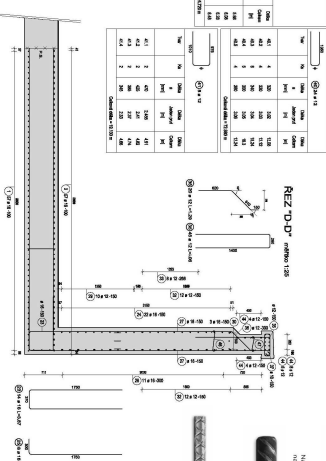
42.  $43m - 6 = 390$   
 $43m = 390 + 6$   
 $43m = 396$   
 $m = \frac{396}{43}$

43.  $44n + 1 = 397$   
 $44n = 397 - 1$   
 $44n = 396$   
 $n = \frac{396}{44}$   
 $n = 9$

44.  $45o - 3 = 402$

TABLE 1					
Year	No.	CMA	Amdt./JUL	CMA	
				1971	1972
1970	12	629	2,075	312	41
1971	12	629	2,075	312	41
1972	12	629	2,075	312	41
1973	12	629	2,075	312	41
1974	12	629	2,075	312	41
1975	12	629	2,075	312	41
1976	12	629	2,075	312	41
1977	12	629	2,075	312	41
1978	12	629	2,075	312	41
1979	12	629	2,075	312	41
1980	12	629	2,075	312	41
1981	12	629	2,075	312	41
1982	12	629	2,075	312	41
1983	12	629	2,075	312	41
1984	12	629	2,075	312	41
1985	12	629	2,075	312	41
1986	12	629	2,075	312	41
1987	12	629	2,075	312	41
1988	12	629	2,075	312	41
1989	12	629	2,075	312	41
1990	12	629	2,075	312	41
1991	12	629	2,075	312	41
1992	12	629	2,075	312	41
1993	12	629	2,075	312	41
1994	12	629	2,075	312	41
1995	12	629	2,075	312	41
1996	12	629	2,075	312	41
1997	12	629	2,075	312	41
1998	12	629	2,075	312	41
1999	12	629	2,075	312	41
2000	12	629	2,075	312	41
2001	12	629	2,075	312	41
2002	12	629	2,075	312	41
2003	12	629	2,075	312	41
2004	12	629	2,075	312	41
2005	12	629	2,075	312	41
2006	12	629	2,075	312	41
2007	12	629	2,075	312	41
2008	12	629	2,075	312	41
2009	12	629	2,075	312	41
2010	12	629	2,075	312	41
2011	12	629	2,075	312	41
2012	12	629	2,075	312	41
2013	12	629	2,075	312	41
2014	12	629	2,075	312	41
2015	12	629	2,075	312	41
2016	12	629	2,075	312	41
2017	12	629	2,075	312	41
2018	12	629	2,075	312	41
2019	12	629	2,075	312	41
2020	12	629	2,075	312	41
2021	12	629	2,075	312	41
2022	12	629	2,075	312	41
2023	12	629	2,075	312	41
2024	12	629	2,075	312	41
2025	12	629	2,075	312	41
2026	12	629	2,075	312	41
2027	12	629	2,075	312	41
2028	12	629	2,075	312	41
2029	12	629	2,075	312	41
2030	12	629	2,075	312	41
2031	12	629	2,075	312	41
2032	12	629	2,075	312	41

③ → +12									
No	Do	DoM	DoM	DoM	DoM	DoM	DoM	DoM	DoM
		Pr	Pr	Pr	Pr	Pr	Pr	Pr	Pr
1	1	1	1	1	1	1	1	1	1
2	2	2	2	2	2	2	2	2	2
3	3	3	3	3	3	3	3	3	3
4	4	4	4	4	4	4	4	4	4
5	5	5	5	5	5	5	5	5	5
6	6	6	6	6	6	6	6	6	6
7	7	7	7	7	7	7	7	7	7
8	8	8	8	8	8	8	8	8	8
9	9	9	9	9	9	9	9	9	9
10	10	10	10	10	10	10	10	10	10
11	11	11	11	11	11	11	11	11	11
12	12	12	12	12	12	12	12	12	12
13	13	13	13	13	13	13	13	13	13
14	14	14	14	14	14	14	14	14	14
15	15	15	15	15	15	15	15	15	15
16	16	16	16	16	16	16	16	16	16
17	17	17	17	17	17	17	17	17	17
18	18	18	18	18	18	18	18	18	18
19	19	19	19	19	19	19	19	19	19
20	20	20	20	20	20	20	20	20	20
21	21	21	21	21	21	21	21	21	21
22	22	22	22	22	22	22	22	22	22
23	23	23	23	23	23	23	23	23	23
24	24	24	24	24	24	24	24	24	24
25	25	25	25	25	25	25	25	25	25
26	26	26	26	26	26	26	26	26	26
27	27	27	27	27	27	27	27	27	27
28	28	28	28	28	28	28	28	28	28
29	29	29	29	29	29	29	29	29	29
30	30	30	30	30	30	30	30	30	30
31	31	31	31	31	31	31	31	31	31
32	32	32	32	32	32	32	32	32	32
33	33	33	33	33	33	33	33	33	33
34	34	34	34	34	34	34	34	34	34
35	35	35	35	35	35	35	35	35	35
36	36	36	36	36	36	36	36	36	36
37	37	37	37	37	37	37	37	37	37
38	38	38	38	38	38	38	38	38	38
39	39	39	39	39	39	39	39	39	39
40	40	40	40	40	40	40	40	40	40
41	41	41	41	41	41	41	41	41	41
42	42	42	42	42	42	42	42	42	42
43	43	43	43	43	43	43	43	43	43
44	44	44	44	44	44	44	44	44	44
45	45	45	45	45	45	45	45	45	45
46	46	46	46	46	46	46	46	46	46
47	47	47	47	47	47	47	47	47	47
48	48	48	48	48	48	48	48	48	48
49	49	49	49	49	49	49	49	49	49
50	50	50	50	50	50	50	50	50	50
51	51	51	51	51	51	51	51	51	51
52	52	52	52						

[illegible]